



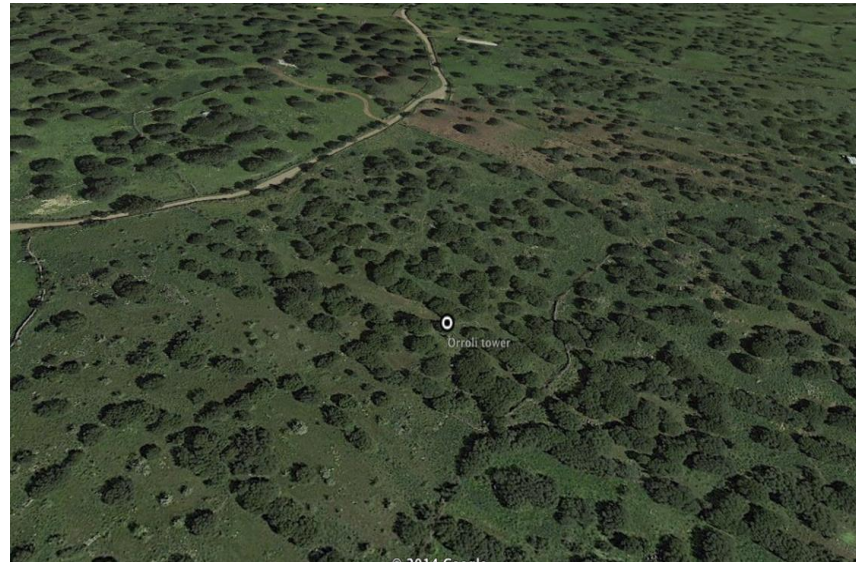
**Task 3.2. modeling combined processes (leader: INAT)**

**UNICA**

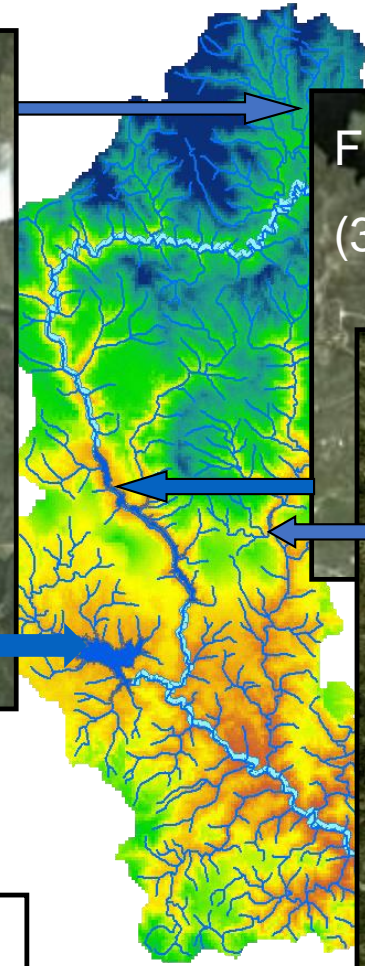
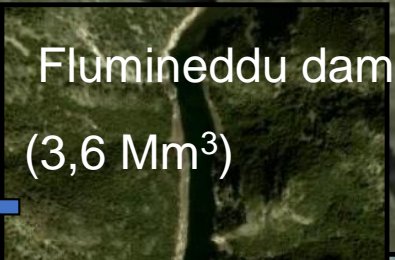
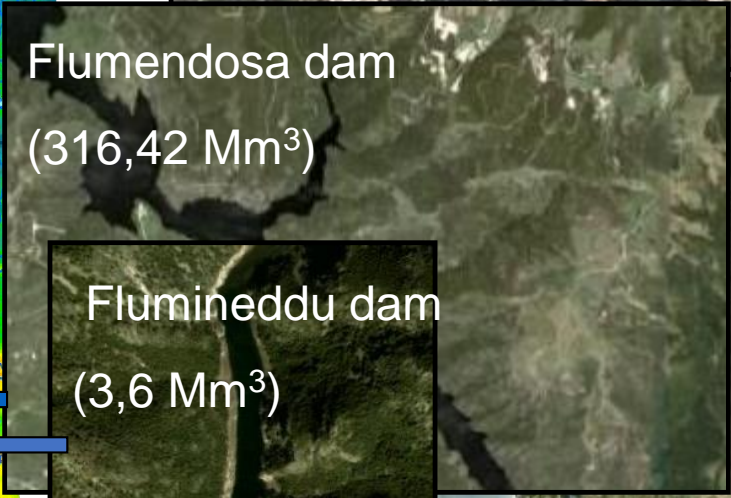
**Dipartimento di Ingegneria Civile , Ambientale e Architettura  
Università di Cagliari, Italy**

**PI: *Nicola Montaldo***

***Giulio Vignoli, Roberto Corona, Serena Sirigu, Alessandro Seoni, Antonio Mascia, Andrea Saba***



Motivation:

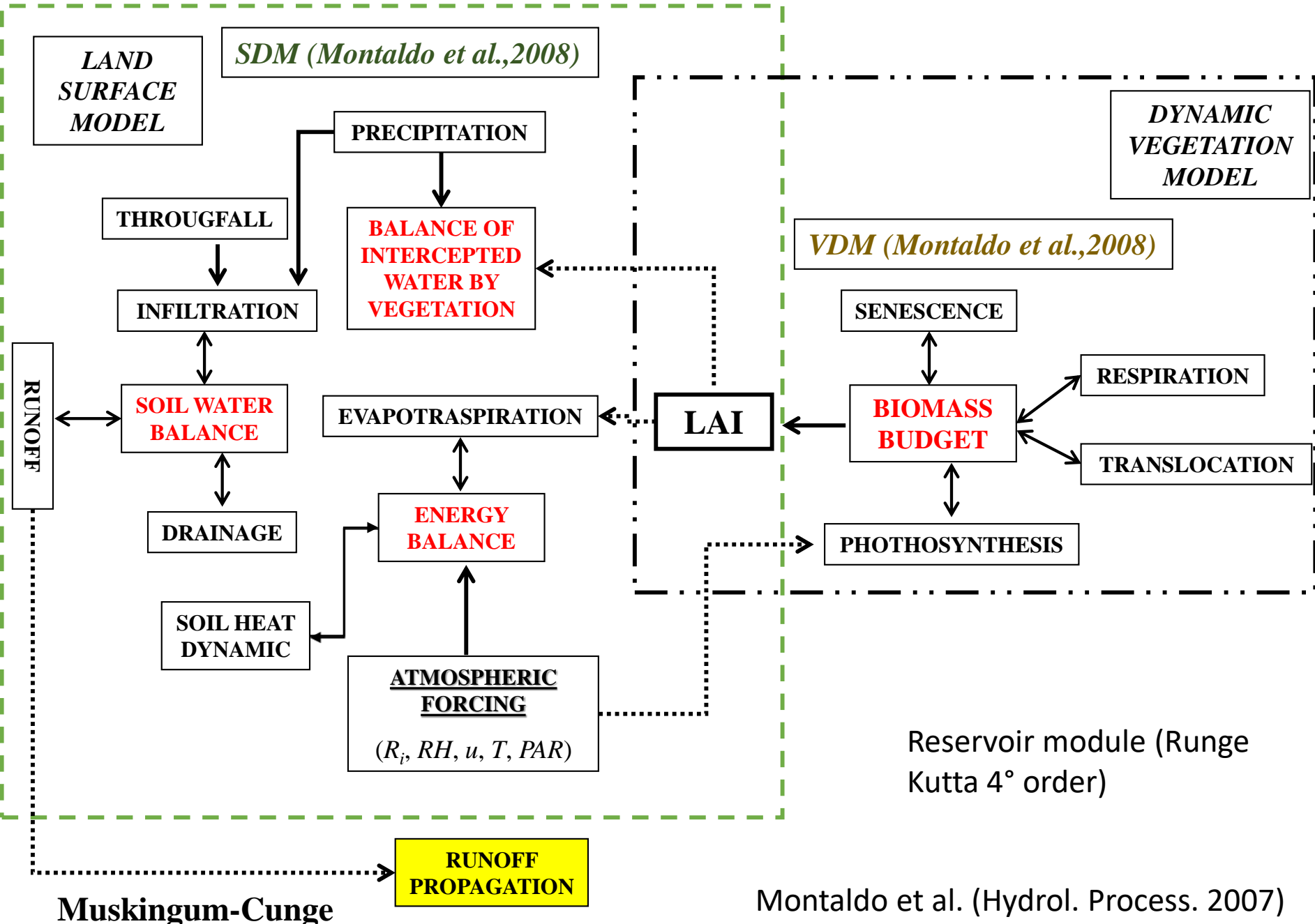


Flumendosa Basin in Sardinia

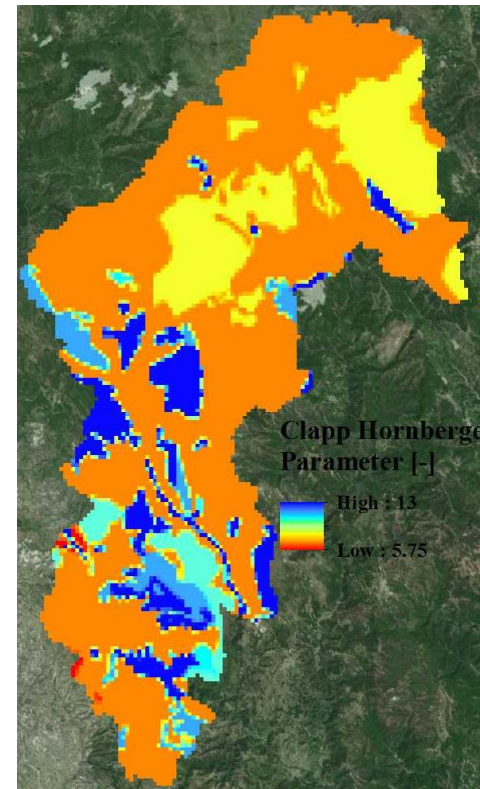
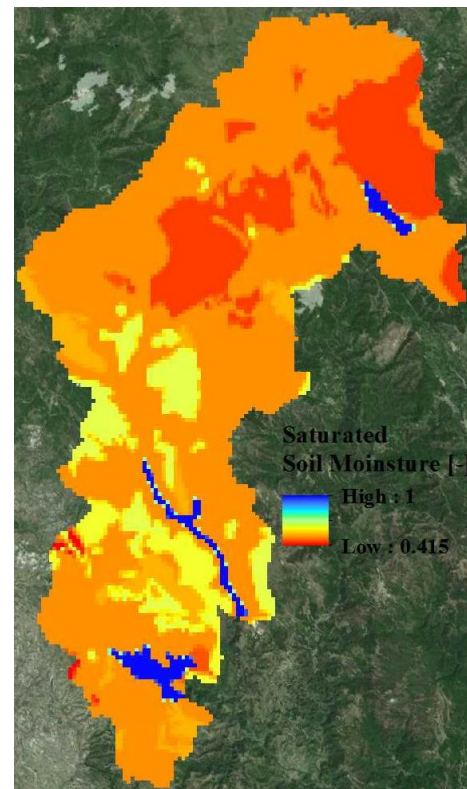
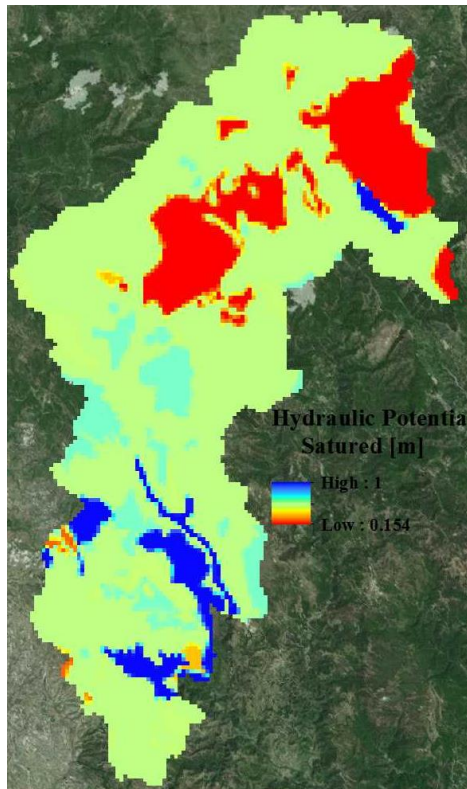
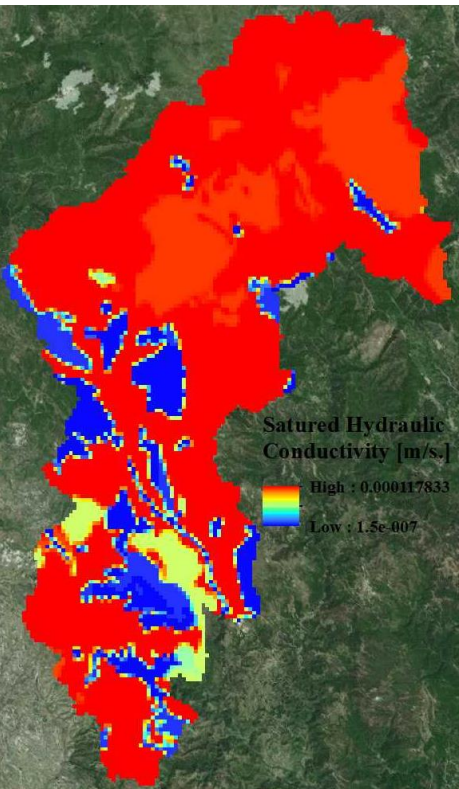
- Area 1830 Km<sup>2</sup>
- Lenth of the main river 127 Km
- Reservoir system capacity: 700 Mm<sup>3</sup>



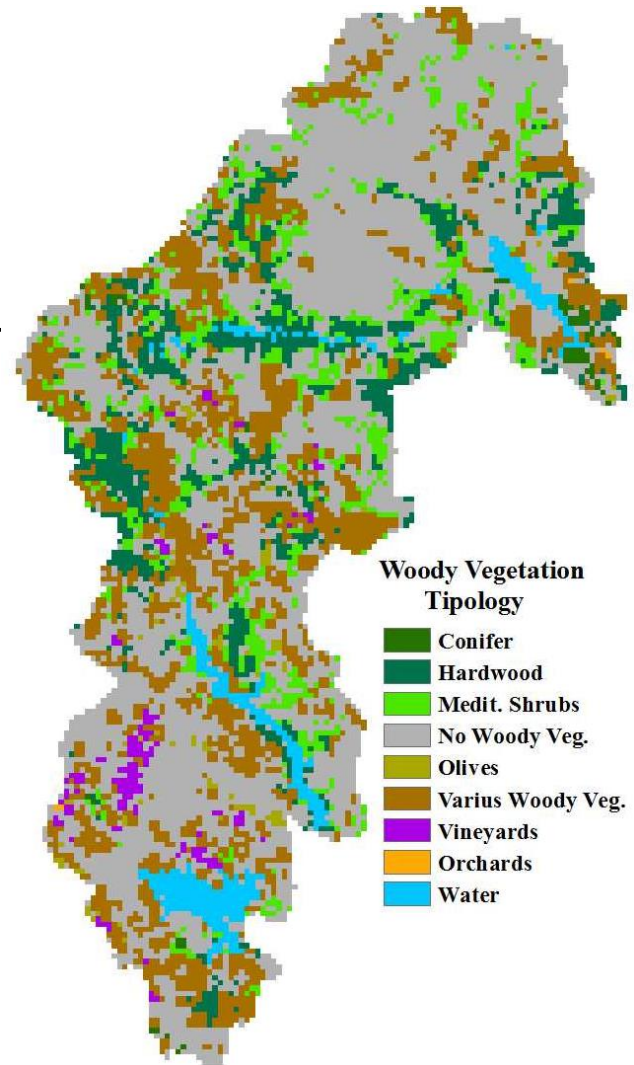
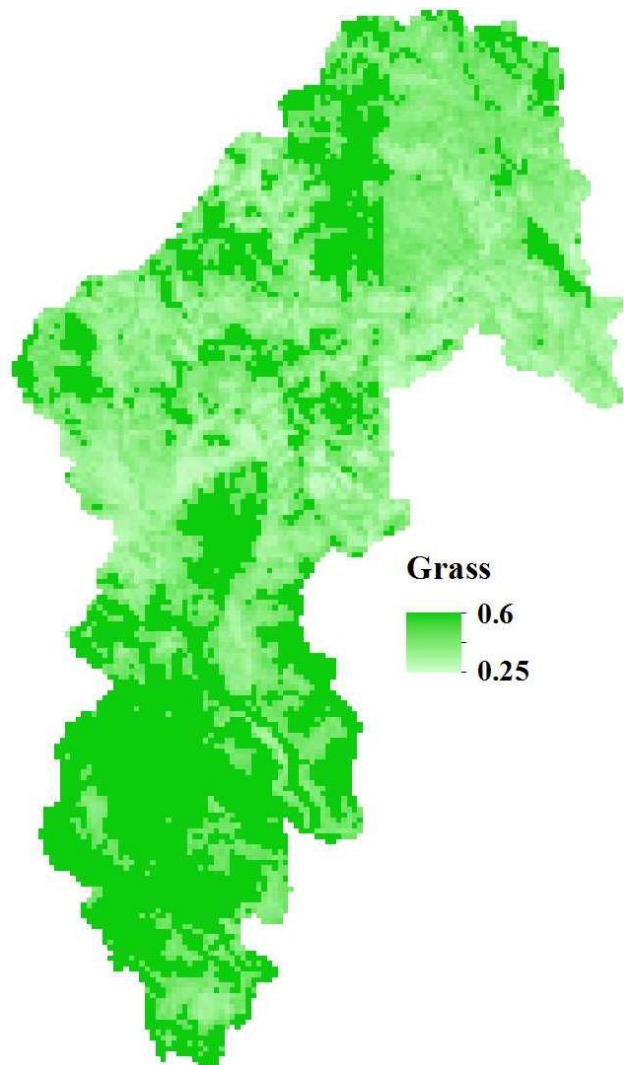
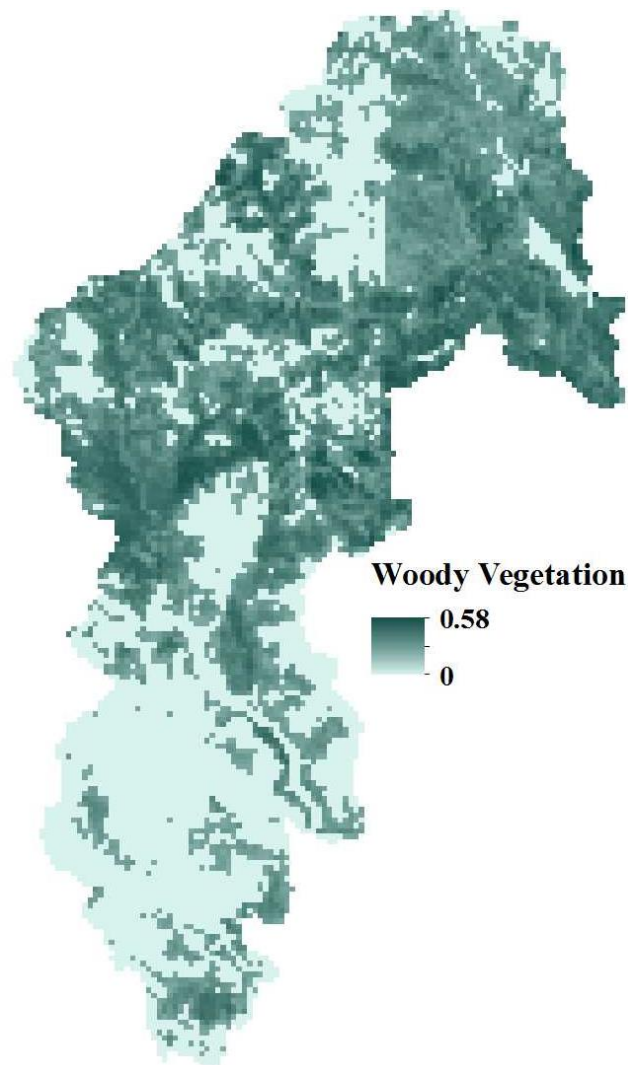
# ECO-HYDROLOGICAL MODEL: STRUCTURE

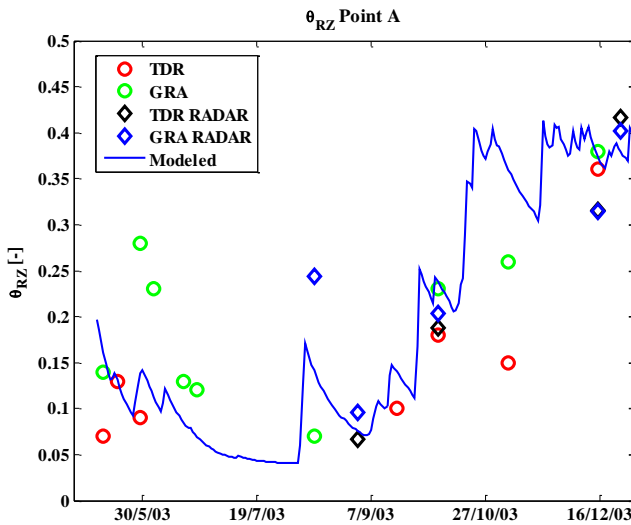
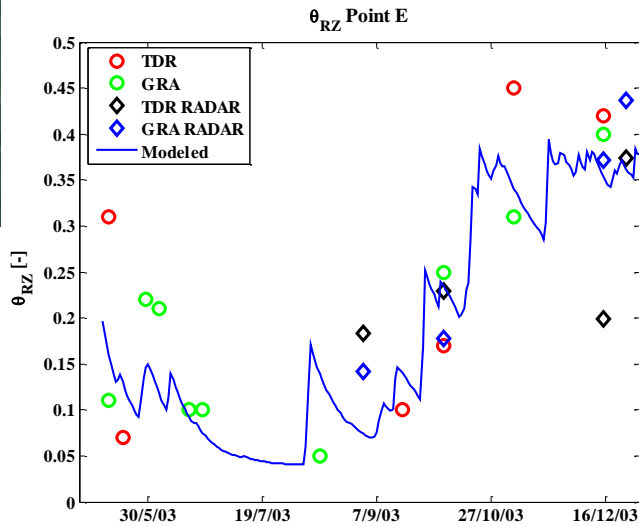
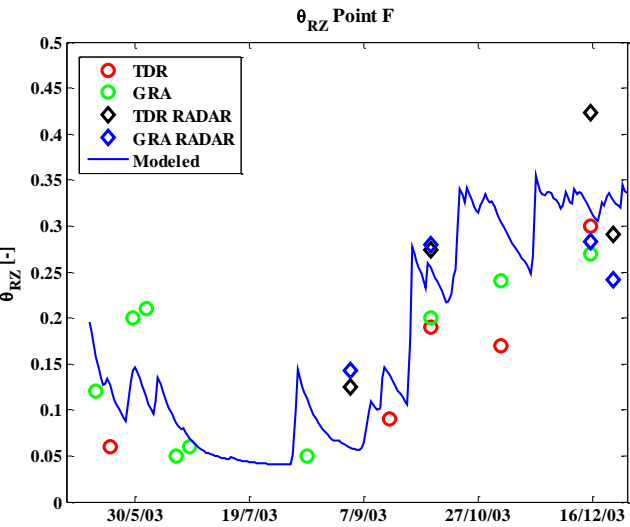
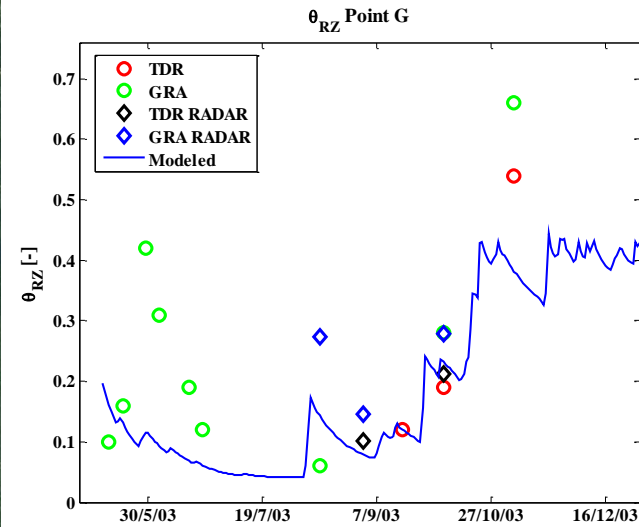
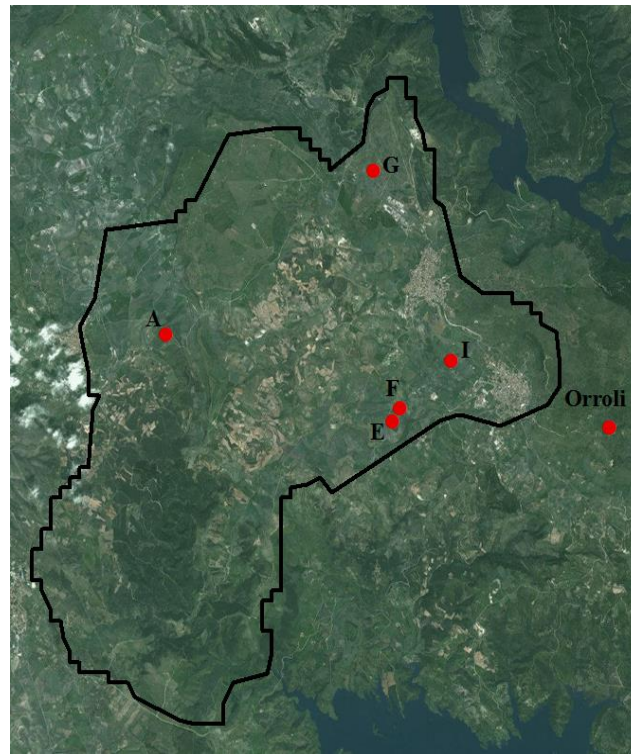
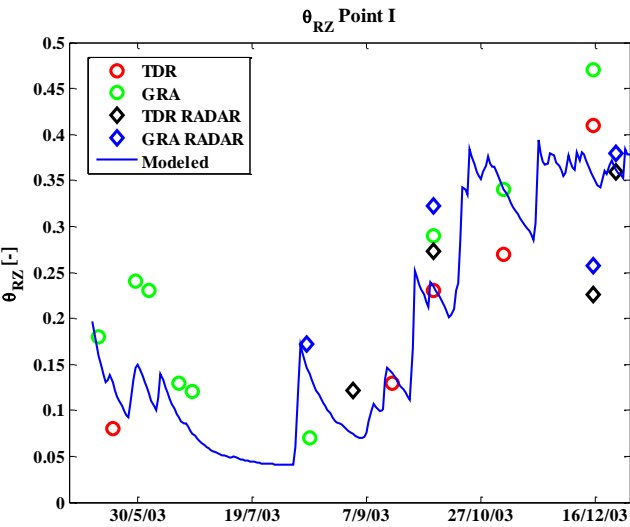


# Soil parameters



# Vegetation parameters





# ECO-HYDROLOGICAL MODEL:

*discharge*

