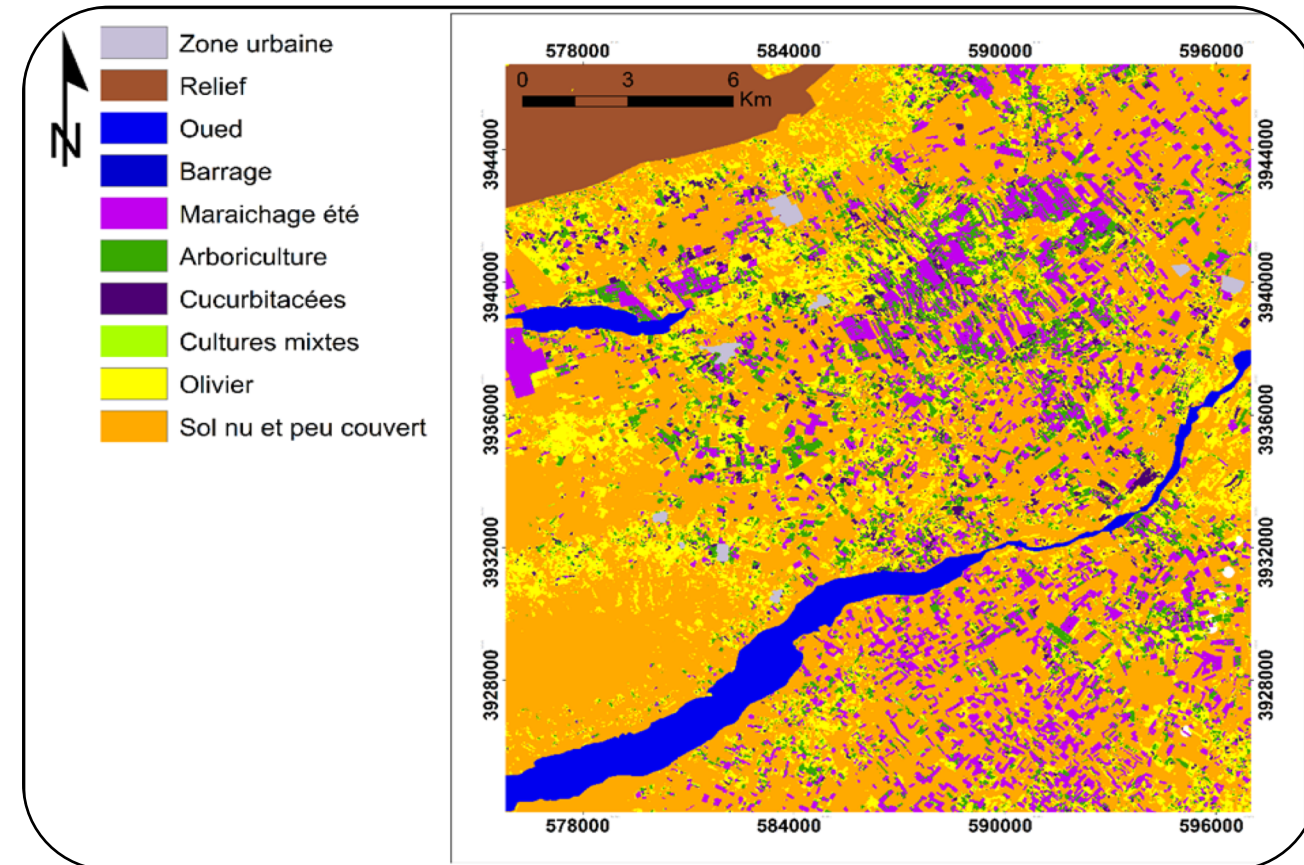
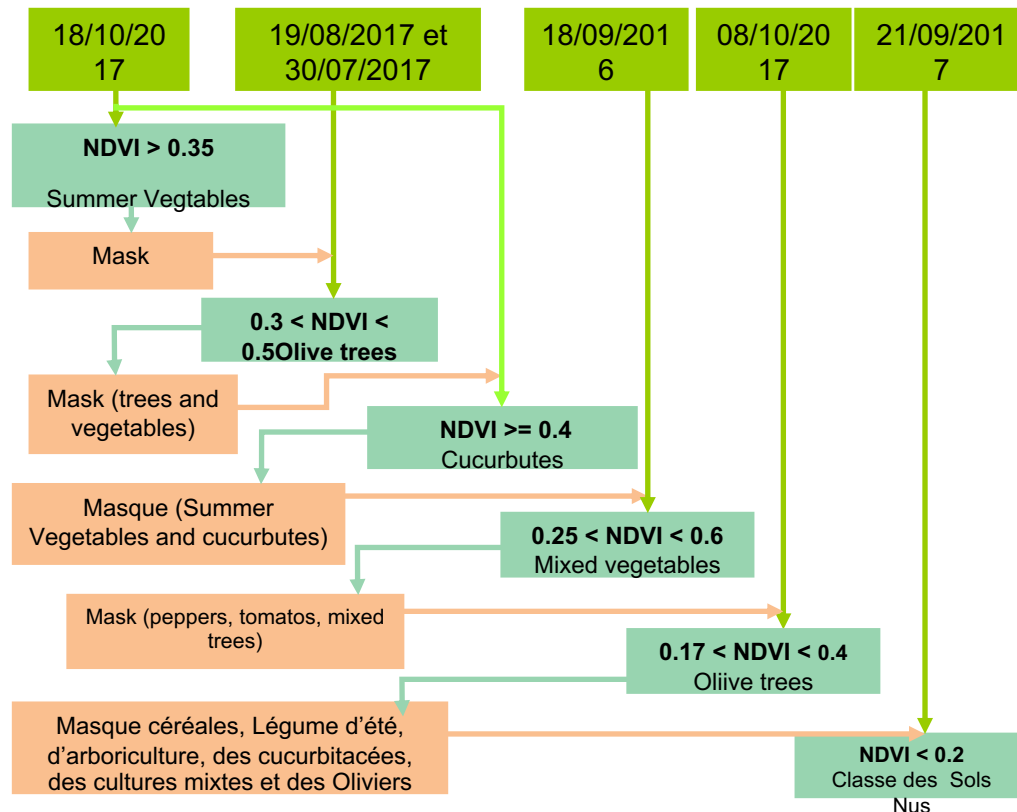


# Task 1.2: landscaping features, agricultural practices and connectivities (leader: LARI).

## Land use.

**Objectives:** Carasterisation of seasonal variability in case of Merguellil area (Agricultural crops are largely extended ( seasonal vegetables (cucurbits, tomatoes, peppers) , olives trees, cereals, fruits trees)

**Methodology:** Temporal variability of spectral indecices derived from spectral open source data (Landsat and Sentinel 2).



Case example of summer landuse in Merguellil Area